



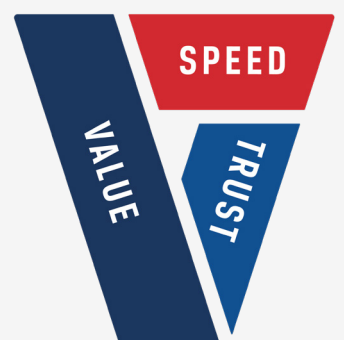
# Local Information

*including Hotels, Restaurants, Shopping,  
Local Attractions and Car Hire information*

---

DAIMLER TRUCKS BALLARAT

---





# Contents

Hotels .....	Page 2
Restaurants .....	Page 4
Shopping .....	Page 6
Local Attractions .....	Page 8
Car Hire Information .....	Page 9

# Hotels

## The Provincial Boutique Hotel

Located within a beautiful heritage listed building, just steps from Ballarat train station, the property provides rooms with cable TV, free WiFi and heating. Free parking is available on site. Each renovated suite or apartment offers a seating area with a flat-screen TV and a DVD player. All provide heating and a minibar. Some rooms include tea/coffee making facilities. Your private bathroom is equipped with free toiletries, a hairdryer and a shower.



121 Lydiard St N, Ballarat  
Reservations (03) 5331 3399

---

## Mercure Ballarat Hotel

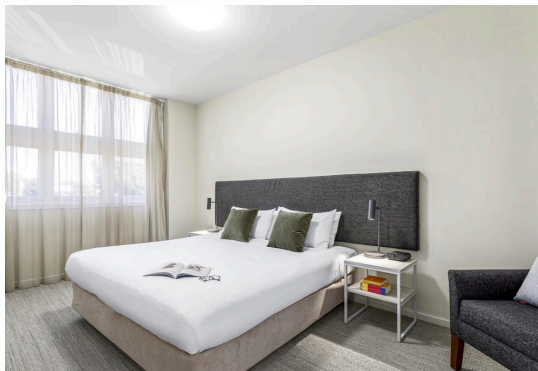
Mercure Ballarat is situated opposite the multi-award winning Sovereign Hill. It is just 5 minutes' drive from the historic centre of Ballarat. Ballarat Golf Course is 13 minutes' drive away. The property is 75 minutes' drive from Melbourne city. Guests can enjoy the Azzuri restaurant, or relax with a massage or treatment at the on-site day spa. The lounge bar offers a selection of wine and beer. All rooms are located on the ground floor and offer garden views. Each room has an LCD TV and tea/coffee making facilities. All accommodation includes free onsite parking. Free WiFi is provided.



613 Main Rd, Golden Point  
Reservations (03) 5327 1200

# Quest Ballarat

Quest Ballarat is located in the city centre, 650 metres from Ballarat Train Station and a 15-minute drive from Ballarat Airport. This stylish property offers an on-site fitness centre, business centre, free on-site parking and a courtyard with barbecue facilities. All apartments feature air conditioning, in-room safes, desk areas and free cable channels. Studio apartments feature a kitchenette and access to shared laundry facilities. 1 and 2 bedroom apartments feature a fully equipped kitchen and laundry facilities. Ballarat Quest is 8 minutes' walk from the Art Gallery of Ballarat and 5 minutes' drive from Sovereign Hill. Kroyal Castle is 10 minutes' drive away.



7/11 Dawson St N, Ballarat Central  
Reservations (03) 5309 1200

---

As a valued customer of Daimler Trucks Ballarat, we are offering free transportation to your choice of the hotels in the booklet.

**Please see reception to organise transport.**

# Restaurants

There is a large array of local restaurants/cafes in the surrounding area.  
Transportation available on request - see reception to organise (subject to availability).

## Blue Bell Hotel

1216 Howitt Street, Wendouree  
(03) 5339 1234  
[bluebellhotel.com.au](http://bluebellhotel.com.au)

Restaurant  
Dine-in • Pick Up

Monday	10:00am - 3:00am
Tuesday	10:00am - 3:00am
Wednesday	10:00am - 3:00am
Thursday	10:00am - 3:00am
Friday	10:00am - 3:00am
Saturday	10:00am - 3:00am
Sunday	10:00am - 3:00am

## Greenside Bistro

1800 Sturt St, Alfredton  
(03) 5338 3009  
[ballaratgolfclub.com.au](http://ballaratgolfclub.com.au)

Restaurant - Cafe  
Dine-in • Takeaway • Delivery

Monday	9:00am - 12:00am
Tuesday	9:00am - 12:00am
Wednesday	9:00am - 12:00am
Thursday	9:00am - 12:00am
Friday	9:00am - 1:00am
Saturday	9:00am - 1:00am
Sunday	10:00am - 11:00pm

# Texas Fried

1002 Howitt Street, Wendouree  
0401 483 927

Restaurant  
Dine-in • Takeaway

Monday	11:00am - 9:30pm
Tuesday	11:00am - 9:30pm
Wednesday	11:00am - 9:30pm
Thursday	11:00am - 9:30pm
Friday	11:00am - 9:30pm
Saturday	11:00am - 9:30pm
Sunday	11:00am - 9:30pm

# Shopping

## Stockland Wendouree Shopping Centre

Norman Street &, Gillies St N, Wendouree  
(03) 5339 5131

Monday	9:00am - 5:30pm
Tuesday	9:00am - 5:30pm
Wednesday	9:00am - 5:30pm
Thursday	9:00am - 7:00pm
Friday	9:00am - 8:00pm
Saturday	9:00am - 5:00pm
Sunday	10:00am - 4:00pm

---

## Central Square Ballarat Shopping Centre

18 Armstrong St S, Ballarat Central  
(03) 5333 4330

Monday	9:00am - 5:30pm
Tuesday	9:00am - 5:30pm
Wednesday	9:00am - 5:30pm
Thursday	9:00am - 5:30pm
Friday	9:00am - 8:00pm
Saturday	9:00am - 5:00pm
Sunday	11:00am - 4:00pm



# The Bridge

62A Bridge Mall, Ballarat Central  
(03) 5331 8948

Monday	9:00am - 5:00pm
Tuesday	9:00am - 5:00pm
Wednesday	9:00am - 5:00pm
Thursday	9:00am - 5:00pm
Friday	9:00am - 5:00pm
Saturday	9:00am - 5:00pm
Sunday	9:00am - 5:00pm

# Local Attractions

## Sovereign Hill

Fraser Avenue, Kings Park  
(03) 5337 1199

Open every day 10:00am - 5:00pm

Sovereign Hill is a glimpse of the vigour and excitement of life on Australia's 1850s goldfields. Visitors can find real gold in the creek – gold pans are provided and it's 'finders keepers', see \$150,000 worth of molten gold poured into a gleaming bar, and take in the rich program of activities, shows and demonstrations.

---

## Ballarat Botanical Gardens

401-405 Wendouree Parade, Lake Wendouree

Open every day 7:30am - 9:00pm

The Ballarat Botanical Gardens Reserve, located on the western shore of picturesque Lake Wendouree, in Ballarat, Victoria, Australia, covers an area of 40 hectares which is divided into three distinct zones.

---

## Ballarat Tramway Museum

100 Gillies St N, Lake Wendouree  
(03) 5334 1580

Open Tuesday 10:00am - 3:00pm, Saturday & Sunday 11:00am - 4:00pm

The Ballarat Tramway Museum is staffed by volunteer members who are dedicated to preserving and operating a part of the former Ballarat street tramways. Tram rides through the beautiful Botanic Gardens alongside Lake Wendouree are available from the Museum. There are special activities for children of all ages. The Museum welcomes groups and can cater for a variety of special occasions.

# Car Hire

If you require a car while your vehicle is being repaired,  
there are car hire companies nearby.

## SIXT Car & Truck Rental Ballarat

1001 Norman St, Wendouree  
(03) 5339 2676  
[sixt.com.au](http://sixt.com.au)

Monday	8:00am - 5:30pm
Tuesday	8:00am - 5:30pm
Wednesday	8:00am - 5:30pm
Thursday	8:00am - 5:30pm
Friday	8:00am - 6:00pm
Saturday	8:00am - 12:00pm
Sunday	8:30am - 12:00pm

**Thank you for visiting Daimler Trucks Ballarat**

We hope to see you again soon



